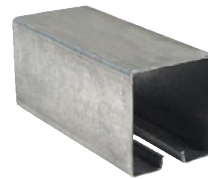


Full Size End View  
(NOTE: TRIM CHAIN NOT SHOWN)



No. 2800 Channel  
1' - 2 lbs. 12 oz.

No. 2800-ABL Channel  
1' - 15 oz.

14 gauge galvanized steel. (No. 2800-A supplied in 12 gauge aluminum with a black finish) Obtainable in unspliced lengths up to 26'. Holes can be drilled for direct ceiling attachment. Approximately: 2-5/8" wide x 2-3/4" high.



No. 2801 (BL) Single Carrier  
1 - 3-1/4 oz.

Carrier spacing: 12". Block constructed of nylon material supported from ball-bearing with 2 heavy duty polyethylene wheels. Plated swivel for free, effortless curtain movement. Trim chain supplied for curtain trimming. Combined carrier and bumper width: Approximately 2". Length from bottom of track to bottom of 5 chain links: Approximately 9-1/4".



## Silent Steel 280 Track

|           |  |                     |
|-----------|--|---------------------|
| Project:  |  | Date:               |
| Drawing # |  | Scale: Not to Scale |

**Theatrical Stage Curtains, LLC.**  
www.TheatricalStageCurtains.com • P: (877) 610-1555 F:(440) 233-1122